



IPU Starting Case Study

Hydraulic Start Packages - Hibiscus

APPLICATION: Emergency Generator Set
LOCATION: Hibiscus Field Trinidad and Tobago
ENGINE: CAT G3516

SOLUTION: IPU has supplied a hydraulic start system for the emergency generator onboard the British Gas Hibiscus development. Located in 500 ft of water, the field is approximately 45km off the North coast of Trinidad.

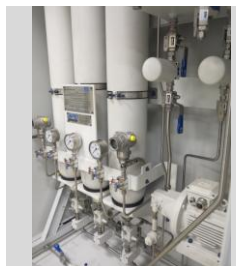
The start system was designed to provide extended cranking cycles, critical for the starting of gas engines; that is an excess of 30 seconds cranking from the three hydraulic accumulators.

Each start attempt is actuated from an individual solenoid start valve and recharged with a motor driven pump. All electrical components are ATEX certified, for use in hazardous area Zone 2 specification.

For environmental protection from the offshore surroundings, the whole hydraulic package was built into a weather proof container.

The system was designed to comply with all aspects of the British Gas engineering specifications and nominated vendors.

For more information contact a member of our Starting Sales Team on +44 (0) 121 511 0400



IPU GROUP Engine Starting Division

Visit our Group website www.ipu.co.uk

IPU Group, Churchbridge, Oldbury,
 West Midlands, B69 2AS England
 T: +44 (0) 121 511 0400 F: +44 (0) 121 511 0401
 E: ipu@ipu.co.uk www.ipu.co.uk

© IPU Group 2011



2003/372

